

NATIONAL POLLUTANT DISCHARGE ELIMINATION SYSTEM PERMIT

NVG201000

In compliance with the provisions of the Clean Water Act (33 U.S.C. 1251 et. Seq. the “Act”) and the Nevada Revised Statutes (Chapter NRS 445A), eligible dischargers who have submitted a Notice of Intent (NOI) and filing fee in accordance with Nevada Administrative Code (NAC) 445A.268, are authorized to discharge

DeMinimis discharges as defined in this permit

To :

Waters of the United States

In accordance with conditions set forth in Parts A, B and C hereof,

This permit became effective on February 11th, 2011.

This permit was modified and shall become effective on July 30th, 2012.

This permit and authorization to discharge shall expire at Midnight, February 11, 2016

Signed this 8th day of August, 2012



Alexi Lanza, P. E.
Bureau of Water Pollution Control
Nevada Division of Environmental Protection



A **PART I - GENERAL PERMIT CONDITIONS**

A.1 **PERMIT OBJECTIVE:**

A.1.1 GNV201000 is for DeMinimis discharges as defined below and may be intermittent or continuous. Its purpose is to provide timely authorization for discharges to Waters of the United States. This general permit establishes Notice of Intent (NOI) requirements, water quality limitations, prohibitions and management practices for five (5) separate discharge categories. For each discharge, a separate permit is required.

A.2 **PERMIT COVERAGE:**

A.2.1 This General Permit covers the State of Nevada.

A.3 **DISCHARGE CATEGORIES:** Category 1 is hereby established as DeMinimis and shall report the duration and quantity in accordance with Section A.9.1.1. Category 2 is hereby established as DeMinimis and up to 1500 gallons per minute (gpm). Categories 3, 4, and 5 are hereby established as DeMinimis and shall be less than 250 gallons per minute (gpm):

A.3.1 **Category 1 - Public Water System (NRS 445A.235) Emergency discharges -** Permitted Public Water System Emergency discharges are a situations which pose an immediate risk to health, life, property or environment.

A.3.2 **Category 2 - Existing Public Water System supply discharges -** Permitted activities include discharges related to construction, maintenance, and testing (quantity, duration and capacity) of a public water system up to 1500 gpm (including the pipes, tanks, and reservoirs) such as:

A.3.2.1 Disinfection and flushing activities;

A.3.2.2 Discharges resulting from pressure releases, or overflows;

A.3.2.3 Discharge from wells and storage reservoirs;

A.3.2.4 Drilling of **NEW** Public Water System wells; or,

A.3.2.5 Public Water System discharges from other devices.

A.3.3 **Category 3 - Well development, testing & maintenance / aquifer testing / water quality testing -** Permitted discharges include discharges of water associated with:

A.3.3.1 Drilling of **NEW** wells (excluding Public Water System wells);

A.3.3.2 Rehabilitation or maintenance of water or geothermal wells, piezometers, and boreholes;

A.3.3.3 Water supply quantity or quality evaluations;

- A.3.3.4 Well/aquifer test pumping and/or purging;
- A.3.3.5 Discharges from any borehole not fully developed.
- A.3.4 **Category 4 - Subsurface water discharges** - Permitted discharges include:
 - A.3.4.1 Groundwater from foundation, footer drain, basement, underground structure or other dewatering, provided the discharge is not contaminated with pollutants, chemicals or co-mingled with other wastewaters;
 - A.3.4.2 Water from intercepted or pumped groundwater.
- A.3.5 **Category 5 - Utility vault water discharges** - Permitted discharges include:
 - A.3.5.1 Groundwater or surface water collected in vaults;
 - A.3.5.2 Water from subterranean seepage;
 - A.3.5.3 Snow melt, storm water, or water present as a result of inclement weather.
- A.4 **PROHIBITED DISCHARGES:** Discharges not covered by this permit include:
 - A.4.1 Discharges in excess of 250 gpm, except as defined in Categories 1 and 2 (above);
 - A.4.2 Category 3. Category 4, or Category 5 type discharges that are within the BMI Complex as defined in Attachment I;
 - A.4.3 Discharges that are subject to effluent limitation guidelines at 40 CFR Part 440;
 - A.4.4 Discharges near or adjacent to hazardous waste sites, remediation sites, or where discharge activities may encounter naturally occurring constituents that would cause a violation of Water Quality Standards;
 - A.4.5 Subsurface (tile) drainage systems(or equivalent);
 - A.4.6 Discharges from mining activities;
 - A.4.7 Leaking chemical and fuel tanks;
 - A.4.8 Discharge of industrial waste;
 - A.4.9 Discharge of domestic/sanitary waste;
 - A.4.10 Biohazardous waste (e.g. wastes from hospitals, dentists, and/or veterinary clinics);
 - A.4.11 Discharges authorized by other NDEP permits;
 - A.4.12 Discharges that are not in conformance with an approved Total Maximum Daily Load

(TMDL);

- A.4.13 Discharges into impaired waters on the Federal Clean Water Act Section 303(d) list, unless the discharge does not contain the pollutant for which the waterbody is impaired, or does not cause or contribute to an exceedance of water quality standards; or that there are sufficient remaining wasteload allocations in an EPA approved or established TMDL to allow the discharge.
- A.4.14 Discharges from vehicle or equipment washing or maintenance activities including mobile washes (e.g. car, carpet, animal, and heavy equipment);
- A.4.15 Underground injection control (UIC) activities;
- A.4.16 Continuous discharges from existing geothermal wells or sources;
- A.4.17 Working in Waters of the U.S.; or,
- A.4.18 Discharges not authorized under this permit.

A.5 ELIGIBILITY, PERMIT REQUIREMENT, AND REQUEST FOR INCLUSION

- A.5.1 All facilities or persons who are planning on conducting any discharge activities described in Section A.1 are eligible for this general permit.
- A.5.2 Existing dischargers who are covered under a current Permit may continue to discharge until such valid permit expires.
- A.5.3 The Division may require the holder of this General Permit apply for and obtain an individual permit in accordance with NRS 445A.480
- A.5.4 Water quality standards included in this permit are promulgated by the Nevada Division of Environmental Protection (NDEP); current toxicity standards are defined in **NAC 445A.1236** - Standards for toxic materials applicable to designated waters.
- A.5.5 New water quality standards for chlorine, toluene, ethylbenzene, *escherichia coli* (e. coli) and fecal coliform are being considered by NDEP. If adopted, these new standards may be included in general permit NVG201000 as a “minor permit modification”.
- A.5.6 To apply for permit coverage all new qualifying dischargers must request inclusion under this permit by completing and submitting an approved NDEP Notice of Intent (NOI) application to the Division along with appropriate permit fees. **The NOI submittal shall be submitted through NDEP’s online permitting system at <http://ndep.nv.gov/bwpc/>.**

A.6 NOI REQUIREMENTS:

- A.6.1 The minimum information required on a NOI consists of the following:

A.6.1.1 Applicant Information:

A.6.1.1.1 Applicant Name, Phone, Address, City, State, and Zip Code.

A.6.1.2 Operator Information:

A.6.1.2.1 Operator Name, Phone, Address, City, State, and Zip Code.

A.6.1.3 Billing Information:

A.6.1.3.1 Billing Name, Phone, Address, City, State, and Zip Code.

A.6.1.4 Site Information:

A.6.1.4.1 Project Name, Address, City, State, Zip Code;

A.6.1.4.2 Discharge latitude and longitude; and,

A.6.1.4.3 Scaled Site location Map showing the path from the initial outfall to the point of discharge to the receiving water.

A.6.1.5 Discharge Information:

A.6.1.5.1 Estimated Start Date;

A.6.1.5.2 Estimated Completion Date;

A.6.1.5.3 Name of the Receiving Water

A.6.1.5.4 Estimated daily flow rate;

A.6.1.5.5 Category of Discharge the permittee is requesting; and,

A.6.1.5.6 Water quality results as required by the Applicable NOI submittal requirements in Section A, below.

A.7 CERTIFICATION:

A.7.1 A signed and dated NOI Certification statement in accordance with Section C of this permit (SIGNATURES, CERTIFICATION REQUIRED ON APPLICATION AND REPORTING FORMS)

A.7.2 If water discharge (disposal) is to property other than the Permittee's, a letter of authorization (from the property owner where the discharge is to occur that explicitly allows the discharge to occur) must be included with the NOI.

A.8 NOTICE OF TERMINATION (NOT) REQUIREMENTS:

A.8.1 An approved NDEP Notice of Termination (NOT) shall be submitted upon cessation of

discharge. NOT applications are available online at <http://ndep.nv.gov/bwpc/>.

- A.8.2** The minimum information required on a NOT consists of the following:
 - A.8.2.1** General Permit and authorization number;
 - A.8.2.2** Discharge Operator / Permittee / Applicant information: name, address, city, county, state, zip code, and phone;
 - A.8.2.3** Project (Site) location information: project name, project address, city, county, state, zip code;
 - A.8.3** A signed and dated NOT Certification statement in accordance with Section C of this permit (SIGNATURES, CERTIFICATION REQUIRED ON APPLICATION AND REPORTING FORMS)
- A.9** **DISCHARGE NOI REQUIREMENTS:**
 - A.9.1** Based on the Category of Discharge, the following parameters must be sampled and submitted with the permit NOI:
 - A.9.1.1** **Category 1 - Public Water System Emergency Discharges: NOI Requirements**
 - A.9.1.1.1** For each Public Water System Emergency Discharge, the permittee shall provide a draft narrative report that describes the location of the discharge;
 - A.9.1.1.2** The estimated duration of the discharge;
 - A.9.1.1.3** Estimated Quantity of discharge; and,
 - A.9.1.1.4** A description of where the discharge entered the Municipal Storm Sewer System (MS4) and/or the associated receiving water.
 - A.9.1.2** **Category 2 - Public Water System Supply discharges: Supplemental Application and NOI Sampling Requirements**
 - A.9.1.2.1** For each New Well discharge, the permittee shall provide a draft narrative report that describes:
 - A.9.1.2.1.1** The location of the discharge;
 - A.9.1.2.1.2** The estimated duration of the discharge;
 - A.9.1.2.1.3** Estimated Quantity of discharge;
 - A.9.1.2.1.4** A description of the BMP's implemented to control drilling fluids, mud or material; and,
 - A.9.1.2.1.5** A representative water quality sample of the discharge.

A.9.1.2.2 For discharges in this category not associated with New well development, or where disinfection with chlorine based compounds were used, samples must be taken and submitted in accordance with the table below

Parameters	Discharge Limit - Daily Maximum	Measurement Frequency	Sample Type
Total Residual Chlorine ¹ - mg/L	0.10	With NOI	Discrete
Total Dissolved Solids ² (TDS) - mg/L	Monitor & Report	With NOI	Discrete
Turbidity - NTU ^{2, 3}	Monitor & Report	With NOI	Discrete

1. Only if disinfection with chlorine based compounds were carried out. Samples must be collected during the first hour of discharge. For discharges that extend beyond an hour in duration, a second sample shall be collected prior to end of discharge, or as specified by the division.
2. BMPs shall be implemented to minimize erosion and sediment.
3. During the discharge, if a visible turbidity plume is generated, a grab sample shall be obtained. Turbidity shall be less than or equal to 10 Nephelometric Turbidity Units (NTUs) over the background value of the receiving water.

A.9.1.3 **Category 3 - Well development, testing & maintenance / aquifer testing / water quality testing: Supplemental Application and NOI Sampling Requirements**

A.9.1.3.1 For each New Well development discharge, the permittee shall provide a draft narrative report that describes:

A.9.1.3.1.1 The location of the discharge;

A.9.1.3.1.2 The estimated duration of the discharge;

A.9.1.3.1.3 Estimated Quantity of discharge;

A.9.1.3.1.4 A description of the BMP's implemented to control drilling fluids, mud or material; and,

A.9.1.3.1.5 A representative water quality sample of the groundwater.

A.9.1.3.2 For discharges not associated with New well development, or where disinfection with chlorine based compounds were used, samples shall be taken and submitted in accordance with the table below.

Parameters	Discharge Limit - Daily Maximum	Measurement Frequency	Sample Type
Total Residual Chlorine ¹ - mg/L	0.10	With NOI	Discrete
Total Dissolved Solids (TDS) - mg/L	Monitor & Report	With NOI	Discrete
Total Suspended Solids (TSS) - mg/L	Monitor & Report	With NOI	Discrete
Total Petroleum Hydrocarbon (TPH) (C6 - C40) - mg/L ⁵	1.0	With NOI	Discrete
Methyl tert-Butyl Ether (MTBE) - µg/L	20.0	With NOI	Discrete
Total Nitrogen as N - mg/L	10.0	With NOI	Discrete
Total Phosphorus as P - mg/L	Monitor & Report	With NOI	Discrete
Trichloroethylene (TCE) - µg/L	5.0	With NOI	Discrete
Tetrachloroethylene (PCE) - µg/L	5.0	With NOI	Discrete

Benzene - µg/L	5.0	With NOI	Discrete
Ethyl benzene - µg/L	100	With NOI	Discrete
Toluene - µg/L	100	With NOI	Discrete
Xylene - µg/L	200	With NOI	Discrete
pH - S.U.	6.5 - 9.0	With NOI	Discrete
Turbidity - NTU ^{2, 3}	Monitor & Report	With NOI	Discrete
Barium - mg/L	2.0	With NOI	Discrete
Fluoride - mg/L	Monitor & Report	With NOI	Discrete
Iron - mg/L	1.0	With NOI	Discrete
Sulfate - mg/L	Monitor & Report	With NOI	Discrete
Dissolved Oxygen	Monitor & Report	With NOI	Discrete
Molybdenum - mg/L	6.16	With NOI	Discrete
Antimony	Monitor & Report	With NOI	Discrete
Arsenic	Monitor & Report	With NOI	Discrete
Beryllium	Monitor & Report	With NOI	Discrete
Boron	Monitor & Report	With NOI	Discrete
Cadmium	Monitor & Report	With NOI	Discrete
Calcium	Monitor & Report	With NOI	Discrete
Copper	Monitor & Report	With NOI	Discrete
Lead	Monitor & Report	With NOI	Discrete
Magnesium	Monitor & Report	With NOI	Discrete
Manganese	Monitor & Report	With NOI	Discrete
Mercury	Monitor & Report	With NOI	Discrete
Nickel	Monitor & Report	With NOI	Discrete
Selenium	Monitor & Report	With NOI	Discrete
Silver	Monitor & Report	With NOI	Discrete
Sulfur	Monitor & Report	With NOI	Discrete
Thallium	Monitor & Report	With NOI	Discrete
Zinc - total recoverable	Monitor & Report	With NOI	Discrete
Fecal Coliform - MPN100 mL	Monitor & Report	With NOI	Discrete
E Coli ⁴ - MPN/100mL	Monitor & Report	With NOI	Discrete
Hardness (expressed as CaCO ₃) - mg/L	Monitor & Report	With NOI	Discrete

1. Samples must be collected during the first hour of discharge. For discharges that extend beyond an hour in duration, a second sample shall be collected prior to end of discharge, or as specified by the division.
2. BMPs shall be implemented to minimize erosion and sediment.
3. During the discharge, if a visible turbidity plume is generated, a grab sample shall be obtained. Turbidity shall be less than or equal to 10 Nephelometric Turbidity Units (NTUs) over the background value of the receiving water.
4. Single Value.
5. EPA Method 8015B and EPA Method 8260B, extractable and purgeable, C6-C40. Summation must meet permit limit.

A.9.1.4 Category 4 - Subsurface water discharges: NOI Sampling Requirements

Parameters	Discharge Limit Daily Maximum	Measurement Frequency	Sample Type
Total Residual Chlorine ¹ - mg/L	0.10	With NOI	Discrete
Total Dissolved Solids (TDS) - mg/L	Monitor & Report	With NOI	Discrete
Total Suspended Solids (TSS) - mg/L	Monitor & Report	With NOI	Discrete
Total Petroleum Hydrocarbon (TPH) (C6 - C40) - mg/L ⁵	1.0	With NOI	Discrete
Methyl tert-Butyl Ether (MTBE) - µg/L	20.0	With NOI	Discrete
Total Nitrogen as N - mg/L	10.0	With NOI	Discrete
Total Phosphorus as P - mg/L	Monitor & Report	With NOI	Discrete
Trichloroethylene (TCE) - µg/L	5.0	With NOI	Discrete
Tetrachloroethylene (PCE) - µg/L	5.0	With NOI	Discrete

Benzene - µg/L	5.0	With NOI	Discrete
Ethyl benzene - µg/L	100	With NOI	Discrete
Toluene - µg/L	100	With NOI	Discrete
Xylene - µg/L	200	With NOI	Discrete
pH - S.U.	6.5 - 9.0	With NOI	Discrete
Turbidity - NTU ^{2, 3}	Monitor & Report	With NOI	Discrete
Barium - mg/L	2.0	With NOI	Discrete
Fluoride - mg/L	Monitor & Report	With NOI	Discrete
Iron - mg/L	1.0	With NOI	Discrete
Sulfate - mg/L	Monitor & Report	With NOI	Discrete
Dissolved Oxygen	Monitor & Report	With NOI	Discrete
Molybdenum - mg/L	6.16	With NOI	Discrete
Antimony	Monitor & Report	With NOI	Discrete
Arsenic	Monitor & Report	With NOI	Discrete
Beryllium	Monitor & Report	With NOI	Discrete
Boron	Monitor & Report	With NOI	Discrete
Cadmium	Monitor & Report	With NOI	Discrete
Calcium	Monitor & Report	With NOI	Discrete
Copper	Monitor & Report	With NOI	Discrete
Lead	Monitor & Report	With NOI	Discrete
Magnesium	Monitor & Report	With NOI	Discrete
Manganese	Monitor & Report	With NOI	Discrete
Mercury	Monitor & Report	With NOI	Discrete
Nickel	Monitor & Report	With NOI	Discrete
Selenium	Monitor & Report	With NOI	Discrete
Silver	Monitor & Report	With NOI	Discrete
Sulfur	Monitor & Report	With NOI	Discrete
Thallium	Monitor & Report	With NOI	Discrete
Zinc - total recoverable	Monitor & Report	With NOI	Discrete
Fecal Coliform - MPN100 mL	Monitor & Report	With NOI	Discrete
E Coli ⁴ - MPN/100mL	Monitor & Report	With NOI	Discrete
Hardness (expressed as CaCO ₃) - mg/L	Monitor & Report	With NOI	Discrete

1. Samples must be collected during the first hour of discharge. For discharges that extend beyond an hour in duration, a second sample shall be collected prior to end of discharge, or as specified by the division.
2. BMPs shall be implemented to minimize erosion and sediment.
3. During the discharge, if a visible turbidity plume is generated, a grab sample shall be obtained. Turbidity shall be less than or equal to 10 Nephelometric Turbidity Units (NTUs) over the background value of the receiving water.
4. Single Value.
5. EPA Method 8015B and EPA Method 8260B, extractable and purgeable, C6-C40. Summation must meet permit limit.

A.9.1.5 Category 5 - Utility vault water discharges: NOI Sampling Requirements

Parameters	Discharge Limit Daily Maximum	Measurement Frequency	Sample Type
Total Residual Chlorine ¹ - mg/L	0.10	With NOI	Discrete
Total Dissolved Solids (TDS) - mg/L	Monitor & Report	With NOI	Discrete
Total Suspended Solids (TSS) - mg/L	Monitor & Report	With NOI	Discrete
Total Petroleum Hydrocarbon (TPH) (C6 - C40) - mg/L ⁵	1.0	With NOI	Discrete
Methyl tert-Butyl Ether (MTBE) - µg/L	20.0	With NOI	Discrete
Total Nitrogen as N - mg/L	10.0	With NOI	Discrete
Total Phosphorus as P - mg/L	Monitor & Report	With NOI	Discrete
Trichloroethylene (TCE) - µg/L	5.0	With NOI	Discrete
Tetrachloroethylene (PCE) - µg/L	5.0	With NOI	Discrete

Benzene - µg/L	5.0	With NOI	Discrete
Ethyl benzene - µg/L	100	With NOI	Discrete
Toluene - µg/L	100	With NOI	Discrete
Xylene - µg/L	200	With NOI	Discrete
pH - S.U.	6.5 - 9.0	With NOI	Discrete
Turbidity - NTU ^{2, 3}	Monitor & Report	With NOI	Discrete
Barium - mg/L	2.0	With NOI	Discrete
Fluoride - mg/L	Monitor & Report	With NOI	Discrete
Iron - mg/L	1.0	With NOI	Discrete
Sulfate - mg/L	Monitor & Report	With NOI	Discrete
Dissolved Oxygen	Monitor & Report	With NOI	Discrete
Molybdenum - mg/L	6.16	With NOI	Discrete
Antimony	Monitor & Report	With NOI	Discrete
Arsenic	Monitor & Report	With NOI	Discrete
Beryllium	Monitor & Report	With NOI	Discrete
Boron	Monitor & Report	With NOI	Discrete
Cadmium	Monitor & Report	With NOI	Discrete
Calcium	Monitor & Report	With NOI	Discrete
Copper	Monitor & Report	With NOI	Discrete
Lead	Monitor & Report	With NOI	Discrete
Magnesium	Monitor & Report	With NOI	Discrete
Manganese	Monitor & Report	With NOI	Discrete
Mercury	Monitor & Report	With NOI	Discrete
Nickel	Monitor & Report	With NOI	Discrete
Selenium	Monitor & Report	With NOI	Discrete
Silver	Monitor & Report	With NOI	Discrete
Sulfur	Monitor & Report	With NOI	Discrete
Thallium	Monitor & Report	With NOI	Discrete
Zinc - total recoverable	Monitor & Report	With NOI	Discrete
Fecal Coliform - MPN100 mL	Monitor & Report	With NOI	Discrete
E Coli ⁴ - MPN/100mL	Monitor & Report	With NOI	Discrete
Hardness (expressed as CaCO ₃) - mg/L	Monitor & Report	With NOI	Discrete

1. Samples must be collected during the first hour of discharge. For discharges that extend beyond an hour in duration, a second sample shall be collected prior to end of discharge, or as specified by the division.
2. BMPs shall be implemented to minimize erosion and sediment.
3. During the discharge, if a visible turbidity plume is generated, a grab sample shall be obtained. Turbidity shall be less than or equal to 10 Nephelometric Turbidity Units (NTUs) over the background value of the receiving water.
4. Single Value.
5. EPA Method 8015B and EPA Method 8260B, extractable and purgeable, C6-C40. Summation must meet permit limit.

A.10 DISCHARGE LIMITATIONS, MONITORING REQUIREMENTS AND CONDITIONS:

- A.10.1** Samples taken in compliance with the monitoring requirements specified below shall be taken prior to discharge into the receiving water.
- A.10.2** The discharge sample must be collected from an approved sampling location or taken from the end of the discharge pipe following the final treatment component of the system including BMPs.
- A.10.3** During the period beginning on the effective date of this General Permit, and lasting until the General Permit expires, discharge activities shall be limited and, as applicable, monitored by the Permittee as specified by the tables in this section below.

A.10.3.1 Category 1 - Public Water System Emergency Discharges: Discharge Limitations, Monitoring Requirements and Conditions

- A.10.3.1.1** For each Public Water System Emergency Discharge the permittee shall provide a Final narrative report that describes the location of the discharge;
- A.10.3.1.2** The duration of the discharge;
- A.10.3.1.3** Estimated Quantity of discharge;
- A.10.3.1.4** A description of where the discharge entered the Municipal Storm Sewer System (MS4) and the associated receiving water;
- A.10.3.1.5** A description of how the emergency event occurred;
- A.10.3.1.6** A description of the corrective action to discontinue the discharge and the repair plan that was implemented;
- A.10.3.1.7** Where applicable, a description of action taken to prevent a future discharge at the same location; and
- A.10.3.1.8** A description of any environmental impacts that may have occurred as a result of the discharge.

A.10.3.2 Category 2 - Public Water System Supply discharges: Discharge Limitations, Monitoring Requirements and Conditions

Parameters	Discharge Limit Daily Maximum	Measurement Frequency ²	Sample Type
Flow - gallons per minute (gpm)	1500	Continuous	Continuous
Total Residual Chlorine ¹ - mg/L	0.10	Two/Discharge	Discrete
Total Dissolved Solids (TDS) - mg/L	Monitor & Report	Annual - 4 th Qtr.	Discrete

1. Samples must be collected during the first hour of discharge. For discharges that extend beyond an hour in duration, a second sample shall be collected prior to end of discharge, or as specified by the division.
2. Test results to be submitted by Jan 28th of the calendar year.

A.10.3.3 Category 3 - Well testing and maintenance / aquifer testing / water quality testing: Discharge Limitations, Monitoring Requirements and Conditions

Parameters	Discharge Limit Daily Maximum	Measurement Frequency ²	Sample Type
Flow - gallons per minute (gpm)	250	Continuous	Continuous
Total Residual Chlorine ¹ - mg/L	0.10	Two/Discharge	Discrete
Total Dissolved Solids (TDS) - mg/L	Monitor & Report	Annual - 4 th Qtr.	Discrete
Total Suspended Solids (TSS) - mg/L	Monitor & Report	Annual - 4 th Qtr.	Discrete
Methyl tert-Butyl Ether (MTBE) - µg/L	20.0	Annual - 4 th Qtr.	Discrete
Total Nitrogen as N - mg/L	10.0	Annual - 4 th Qtr.	Discrete
Total Phosphorus as P	Monitor & Report	Annual - 4 th Qtr.	Discrete
Trichloroethylene (TCE) - ug/L	5.0	Annual - 4 th Qtr.	Discrete

Tetrachloroethylene (PCE) - ug/L	5.0	Annual - 4 th Qtr.	Discrete
Benzene - ug/L	5.0	Annual - 4 th Qtr.	Discrete
Ethyl benzene - ug/L	100.0	Annual - 4 th Qtr.	Discrete
Toluene - ug/L	100.0	Annual - 4 th Qtr.	Discrete
Xylene - ug/L	200.0	Annual - 4 th Qtr.	Discrete
pH - SU	6.5 - 9.0	Annual - 4 th Qtr.	Discrete
Total Petroleum Hydrocarbon (TPH) (C6 - C40) mg/L ³	1.0	Annual - 4 th Qtr.	Discrete

1. Samples must be collected during the first hour of discharge. For discharges that extend beyond an hour in duration, a second sample shall be collected prior to end of discharge, or as specified by the division.
2. Test results to be submitted by Jan 28th of the calendar year.
3. EPA Method 8015B and EPA Method 8260B, extractable and purgeable, C6-C40. Summation must meet permit limit.

A.10.3.4 Category 4 - Subsurface water discharges: Discharge Limitations, Monitoring Requirements and Conditions

Parameters	Discharge Limit - Daily Maximum	Measurement Frequency ⁵	Sample Type
Flow - gallons per minute (gpm)	250	Continuous	Continuous
Total Residual Chlorine ¹ - mg/L	0.10	Two/Discharge	Discrete
Total Dissolved Solids (TDS) - mg/L	Monitor & Report	Annual - 4 th Qtr.	Discrete
Total Suspended Solids (TSS) - mg/L	Monitor & Report	Annual - 4 th Qtr.	Discrete
Methyl tert-Butyl Ether (MTBE) - µg/L	20.0	Annual - 4 th Qtr.	Discrete
Total Nitrogen as N - mg/L	10.0	Annual - 4 th Qtr.	Discrete
Total Phosphorus as P	Monitor & Report	Annual - 4 th Qtr.	Discrete
Trichloroethylene (TCE) - ug/L	5.0	Annual - 4 th Qtr.	Discrete
Tetrachloroethylene (PCE) - ug/L	5.0	Annual - 4 th Qtr.	Discrete
Benzene - ug/L	5.0	Annual - 4 th Qtr.	Discrete
Ethyl benzene - ug/L	100.0	Annual - 4 th Qtr.	Discrete
Toluene - ug/L	100.0	Annual - 4 th Qtr.	Discrete
Xylene - ug/L	200.0	Annual - 4 th Qtr.	Discrete
pH - SU	6.5 - 9.0	Annual - 4 th Qtr.	Discrete
Total Petroleum Hydrocarbon (TPH) (C6 - C40) mg/L ⁶	1.0	Annual - 4 th Qtr.	Discrete
Barium - mg/L	2.0	Annual - 4 th Qtr.	Discrete
Fluoride - mg/L	Monitor & Report	Annual - 4 th Qtr.	Discrete
Iron - mg/L	1.0	Annual - 4 th Qtr.	Discrete
Sulfate - mg/L	Monitor & Report	Annual - 4 th Qtr.	Discrete
Molybdenum - mg/L	6.16	Annual - 4 th Qtr.	Discrete
Turbidity - NTU ^{2, 3}	Monitor & Report	Annual - 4 th Qtr.	Discrete
Fecal Coliform - MPN/100 mL	Monitor & Report	Annual - 4 th Qtr.	Discrete
E Coli ⁴ - MPN/100 mL	Monitor & Report	Annual - 4 th Qtr.	Discrete
Dissolved Oxygen - mg/L	Monitor & Report	Annual - 4 th Qtr.	Discrete

1. Samples must be collected during the first hour of discharge. For discharges that extend beyond an hour in duration, a second sample shall be collected prior to end of discharge, or as specified by the division.
2. BMPs shall be implemented to minimize erosion and sediment.
3. During the discharge, if a visible turbidity plume is generated, a grab sample shall be obtained. Turbidity shall be less than or equal to 10 Nephelometric Turbidity Units (NTUs) over the background value of the receiving water.
4. Single Value.
5. Test results to be submitted by Jan 28th of the calendar year.
6. EPA Method 8015B and EPA Method 8260B, extractable and purgeable, C6-C40. Summation must meet permit limit.

A.10.3.5 Category 5 - Utility vault water discharges: Discharge Limitations, Monitoring Requirements and Conditions

Parameters	Discharge Limit - Daily Maximum	Measurement Frequency ⁵	Sample Type
Flow - gallons per minute (gpm)	250	Continuous	Continuous
Total Residual Chlorine ¹ - mg/L	0.10	Two/Discharge	Discrete
Total Dissolved Solids (TDS) - mg/L	Monitor & Report	Annual - 4 th Qtr.	Discrete
Total Suspended Solids (TSS) - mg/L	Monitor & Report	Annual - 4 th Qtr.	Discrete
Methyl tert-Butyl Ether (MTBE) - µg/L	20.0	Annual - 4 th Qtr.	Discrete
Total Nitrogen as N - mg/L	10.0	Annual - 4 th Qtr.	Discrete
Total Phosphorus as P	Monitor & Report	Annual - 4 th Qtr.	Discrete
Trichloroethylene (TCE) - ug/L	5.0	Annual - 4 th Qtr.	Discrete
Tetrachloroethylene (PCE) - ug/L	5.0	Annual - 4 th Qtr.	Discrete
Benzene - ug/L	5.0	Annual - 4 th Qtr.	Discrete
Ethyl benzene - ug/L	100.0	Annual - 4 th Qtr.	Discrete
Toluene - ug/L	100.0	Annual - 4 th Qtr.	Discrete
Xylene - ug/L	200.0	Annual - 4 th Qtr.	Discrete
pH - SU	6.5 - 9.0	Annual - 4 th Qtr.	Discrete
Total Petroleum Hydrocarbon (TPH) (C6 - C40) mg/L ⁶	1.0	Annual - 4 th Qtr.	Discrete
Barium - mg/L	2.0	Annual - 4 th Qtr.	Discrete
Fluoride - mg/L	Monitor & Report	Annual - 4 th Qtr.	Discrete
Iron - mg/L	1.0	Annual - 4 th Qtr.	Discrete
Sulfate - mg/L	Monitor & Report	Annual - 4 th Qtr.	Discrete
Molybdenum - mg/L	6.16	Annual - 4 th Qtr.	Discrete
Turbidity - NTU ^{2, 3}	Monitor & Report	Annual - 4 th Qtr.	Discrete
Fecal Coliform - MPN100 mL	Monitor & Report	Annual - 4 th Qtr.	Discrete
E Coli ⁴ - MPN/100 mL	Monitor & Report	Annual - 4 th Qtr.	Discrete
Dissolved Oxygen - mg/L	Monitor & Report	Annual - 4 th Qtr.	Discrete
Antimony	Monitor & Report	Annual - 4 th Qtr.	Discrete
Arsenic	Monitor & Report	Annual - 4 th Qtr.	Discrete
Beryllium	Monitor & Report	Annual - 4 th Qtr.	Discrete
Boron	Monitor & Report	Annual - 4 th Qtr.	Discrete
Cadmium	Monitor & Report	Annual - 4 th Qtr.	Discrete
Calcium	Monitor & Report	Annual - 4 th Qtr.	Discrete
Copper	Monitor & Report	Annual - 4 th Qtr.	Discrete
Lead	Monitor & Report	Annual - 4 th Qtr.	Discrete
Magnesium	Monitor & Report	Annual - 4 th Qtr.	Discrete
Manganese	Monitor & Report	Annual - 4 th Qtr.	Discrete
Mercury	Monitor & Report	Annual - 4 th Qtr.	Discrete
Nickel	Monitor & Report	Annual - 4 th Qtr.	Discrete
Selenium	Monitor & Report	Annual - 4 th Qtr.	Discrete
Silver	Monitor & Report	Annual - 4 th Qtr.	Discrete
Sulfur	Monitor & Report	Annual - 4 th Qtr.	Discrete
Thallium	Monitor & Report	Annual - 4 th Qtr.	Discrete
Zinc - total recoverable	Monitor & Report	Annual - 4 th Qtr.	Discrete

1. Samples must be collected during the first hour of discharge. For discharges that extend beyond an hour in duration, a second sample shall be collected prior to end of discharge, or as specified by the division.
2. BMPs shall be implemented to minimize erosion and sediment.
3. During the discharge, if a visible turbidity plume is generated, a grab sample shall be obtained. Turbidity shall be less than or equal to 10 Nephelometric Turbidity Units (NTUs) over the background value of the receiving water.

4. Single Value.
5. Test results to be submitted by Jan 28th of the calendar year.
6. EPA Method 8015B and EPA Method 8260B, extractable and purgeable, C6-C40. Summation must meet permit limit.

A.11 MONITORING AND REPORTING:

A.11.1 Monitoring:

A.11.1.1 Representative Samples:

A.11.1.1.1 Samples and measurements taken as required herein shall be representative of the nature and volume of the monitored discharge. Analysis shall be performed by a State of Nevada certified laboratory. Results from this laboratory must accompany the Discharge Monitoring Report (DMR) Form; monitoring results shall be submitted to the address listed in I.D.9 within 30 days of the discharge, or as required.

A.11.1.1.2 Copies of sample and measurement results shall be maintained on site.

A.11.1.2 Recording the Results:

A.11.1.2.1 For each measurement or sample taken pursuant to the requirements of this General Uncontaminated Water Discharge Permit, the Permittee shall record the following information:

A.11.1.2.2 The exact place, date, and time of sampling;

A.11.1.2.3 The dates the analyses were performed;

A.11.1.2.4 The person(s) who performed the analyses;

A.11.1.2.5 The analytical techniques or methods used (list field testing equipment);

A.11.1.2.6 The results of all required analyses, including reporting limits.

A.11.1.3 Additional Monitoring by Permittee:

A.11.1.3.1 If the Permittee monitors any constituent at the location(s) designated herein more frequently than required by this general discharge permit, using approved analytical methods and laboratories as specified above, the results of that monitoring shall be included in the next annual or monitoring report submitted to the Division on the DMR form. Such increased frequency shall also be indicated on the DMR.

A.11.1.4 Annual Sampling:

A.11.1.4.1 Required sampling protocol is defined in Section C of the permit;

A.11.1.4.2 Discharge monitoring reports are due on January 28th (4th Quarter) of the calendar year as defined in Section A of the permit;

A.11.1.4.3 Additionally, the Permittee shall document and report inspection findings, update spill and unauthorized discharge information including clean up and preventive actions taken and report any modifications to the BMPs. The reports shall include all monitoring data collected, including data collected in accordance with Section C of this permit and a summary/ interpretation of that data;

A.11.1.4.4 The discharge shall not cause the following in the receiving water:

A.11.1.4.4.1 Concentrations of dissolved oxygen (DO) in the receiving water to fall below 7.0 mg/L. During any period when the receiving water DO concentration is already below 7.0 mg/L, the discharge shall not further diminish the DO content;

A.11.1.4.4.2 Alteration to the color, taste or odor beyond present natural ambient levels;

A.11.1.4.4.3 Turbidity in amounts which adversely affect beneficial uses in the receiving waters. Turbidity shall not increase more than 20 percent over background levels;

A.11.1.4.4.4 Significant erosion, sedimentation or alteration of the watercourse;

A.11.1.4.4.5 Biostimulatory substances to be present in concentrations that promote aquatic growths to the extent that such growths cause nuisance or adversely affect beneficial uses;

A.11.1.4.4.6 The normal ambient receiving water to be altered more than 5° F (Fahrenheit), if a temperature standard is present;

A.11.1.4.4.7 Further degradation of any 303d listed receiving water for an established parameter.

A.11.2 Reporting:

A.11.2.1 Annual Reports:

A.11.2.1.1 Annual reports are required for NDEP approved discharge operations as defined in Section C of the permit.

A.11.2.1.2 Annual monitoring results obtained pursuant to Section A of the permit are due each January 28th (4th Quarter) of the current calendar year. Reports shall be summarized and reported on a Discharge Monitoring Report (DMR) form. The Permittee shall also submit the data in an electronic format provided by the Division addressed in Section C below.

A.11.2.1.3 Summaries of laboratory results for analyses conducted by outside laboratories must accompany the DMR, and the full data package provided by the laboratory must be provided if requested in writing by the Division. If at any time the Permittee concludes that submitted data were incorrect, the Permittee shall notify the Division in writing, identify the incorrect data, and replace the incorrect data with corrected data, which shall thereafter be used for determining compliance with this permit

A.11.2.2 Compliance Report:

A.11.2.2.1 Reports of compliance or noncompliance with, or any progress reports on, interim and final requirements contained in any compliance schedule of this permit shall be submitted no later than 14 days following each schedule date.

A.11.3 Other information:

A.11.3.1 Where the Permittee becomes aware that it failed to submit any relevant facts in a permit application, or submitted incorrect information in a permit application or in any report to the Administrator, it shall promptly submit such facts or information.

A.12 ANNUAL FEE:

A.12.1 The Permittee shall remit an annual review and services fee in accordance with NAC 445A.268 on or before July 1st of every year that the Permittee is authorized to discharge under this General Permit.

SECTION B:

B.1 GENERAL PERMIT COVERAGE FOR ONGOING PROJECTS:

B.1.1 Current permits are valid until expiration date. To be covered by this permit, holders of an expired permit must submit a new NOI with the proper filing fee.

B.2 NARRATIVE STANDARDS:

B.2.1 Discharges shall not cause the following standards to be violated in any surface waters of the state. Waters must be free from:

B.2.1.1 Substances that will settle to form sludge or bottom deposits in amounts sufficient to be unsightly, putrescent or odorous;

B.2.1.2 Floating debris, oil, grease, scum, and other floating materials in amounts sufficient to be unsightly;

B.2.1.3 Materials in amounts sufficient to produce taste or odor in the water or detectable off-flavor in the flesh of fish or in amounts sufficient to change the existing color, turbidity or other conditions in the receiving stream to such a degree as to create a public nuisance;

B.2.1.4 High temperature, biocides, organisms pathogenic to human beings, toxic, corrosive or other deleterious substances at levels or combinations sufficient to be toxic to human, animal, plant or aquatic life;

B.2.1.5 Radioactive materials must not result in accumulations of radioactivity in plants or animals that result in a hazard to humans or harm to aquatic life;

B.2.1.6 Untreated or uncontrolled wastes or effluents that are reasonably amenable to treatment or control; and

- B.2.1.7** Substances or conditions, which interfere with the beneficial use of the receiving waters.
- B.2.2** The narrative standards are not considered violated when the natural conditions of the receiving water are outside the established limits, including periods of high or low flow. Where effluents are discharged to such waters, the discharges are not considered a contributor to substandard conditions provided maximum treatment in compliance with permit requirements is maintained.
- B.2.3** There shall be no objectionable odors from the collection system, treatment facility or disposal area, or biosolids treatment, use, storage or disposal area that the Permittee owns or operates.
- B.2.4** There shall be no discharge of substances that would cause a violation of water quality standards of the State of Nevada as defined by the permit.
- B.2.5** The permit may be reopened, and additional limits imposed, if it is determined that the discharge is causing a violation of ambient water quality standards of the State of Nevada.
- B.2.6** There shall be no discharge from the collection, treatment and disposal facilities except as authorized by this permit or in accordance with the Division's Spill Reporting Policy.
- B.2.7** The treatment and disposal facility shall be fenced and posted.
- B.2.8** There shall be no discharge of floating solids or visible foam in other than trace amounts.
- B.3 BEST MANAGEMENT PRACTICES (BMP):**
- B.3.1** BMP's shall be implement and maintained to the Maximum Extent Practicable
- B.3.2** Permittees shall implement BMPs prior to commencement of discharge.
- B.3.3** A Permittee shall implement the BMP requirements to ensure compliance with the terms and conditions of this general permit.
- B.3.4** The Permittee shall make all BMP records and plans available to the Division upon request.
- B.3.5** All sediment control measures and other protective measures must be maintained in effective operating condition.
- B.3.6** If existing BMPs need to be modified or additional BMPs are necessary, implementation must be completed as soon as possible.
- B.3.7** All erosion and sediment control measures and other protective measures must be maintained in effective operating condition. If site inspections identify BMPs that are not operating effectively or if the capacity has been reduced by 50%, maintenance

shall be performed.

B.3.8 NDEP may require modifications to the site BMP's.

B.4 24 HOUR REPORTING:

B.4.1 The Permittee shall orally report any noncompliance or discharge which may seriously endanger human health or the environment as soon as possible, but no later than 24 hours from the time the Permittee becomes aware of the circumstances. The report shall be made to the Division at (888) 331-6337 during normal business hours. A written report shall also be submitted to the Division within ten days of the time the Permittee becomes aware of the circumstances. The written submission shall contain a description of the event, and its cause; the period of time over which it occurred, including exact dates and times, and if the situation has not been corrected, the anticipated time it is expected to continue; and steps taken or planned to reduce, eliminate, and prevent reoccurrence.

B.5 PHOTOGRAPHIC DOCUMENTATION:

B.5.1 Discharges conducted under the terms and conditions of this General Permit shall also be monitored by means of photographic documentation to verify performance of the water management BMPs and the discharge point BMPs. The photographs shall be submitted with a brief summary narrative report quarterly if conditions have changed. Photographs shall be taken from established photograph points, and shall depict representative views of the discharge activities on site, as well as the scope of operations with project sites, monitoring location(s), discharge point(s), and any relevant activity related to the discharge.

C SECTION C:

C.1 DEFINITIONS AND GENERAL REQUIREMENTS:

C.1.1 **Municipal Separate Storm Sewer Systems (MS4)**, as defined in 40 CFR 122.26 (b) (8) http://edocket.access.gpo.gov/cfr_2002/julqtr/40cfr122.26.htm, is a conveyance or system of conveyances that is: Owned by a state, city, town, village, or other public entity that discharges to waters of the U.S.; Designed or used to collect or convey stormwater (including storm drains, pipes, ditches, etc.); Not a combined sewer; and Not part of a Publicly Owned Treatment Works (sewage treatment plant).

C.1.2 **Best Management Practices (BMPs)** means schedules of activities, prohibitions of practices, maintenance procedures and other management practices to prevent or reduce the pollution of Waters of the U.S. BMPs also include treatment requirements, operating procedures and practices to control site runoff, spillage, leaks, or other sources of pollution.

C.1.3 **DeMinimis discharge** means a discharge that is relatively pollutant free water which when discharged, in conjunction with appropriate BMPs that are used to reduce any and all pollutants to below the applicable limits set by this permit, has minimal or no

adverse impact to the environment or public health.

- C.1.4** **Utility** means a system to provide for the distribution of water, natural gas, electricity, communications (including telephone, cellular telephone towers, and fiber optics), cable television and other such systems.
- C.1.5** **Waters of the U. S.** is defined at 40 CFR §122.2, and includes but is not limited to lakes, reservoirs, ponds, rivers, streams (including intermittent and ephemeral streams), creeks, washes, draws, sloughs, playas and wetlands.
- C.1.6** **303 (d) List - Nevada:** Criteria - Please see the following link:
http://ndep.nv.gov/bwqp/file/303d_list09.pdf
- C.1.7** **303 (d) List - Nevada:** Nevada's 303(d) List of Impaired Waters - Please see the following link: http://ndep.nv.gov/bwqp/file/303d_list09-att1.pdf
- C.2** **TEST PROCEDURES:**
- C.2.1** Test procedures for the analysis of pollutants shall conform to regulations (40 CFR, Part 136) published pursuant to Section 304(h) of the Act, under which such procedures may be required unless the Division approves other procedures. For the purpose of this permit, the Permittee may use alternate field test kits and instrumentation for field screening. Field testing is permitted, using suitable methods for flow, pH, total chlorine residual and temperature.
- C.3** **PLANNED CHANGES:**
- C.3.1** The Permittee shall give notice to the Administrator as soon as possible of any planned physical alterations or additions to the permitted facility.
- C.3.2** Notice is required only when the alteration or addition to a permitted facility, may meet one of the criteria for determining whether a facility is a new source (40 CFR 122.29(b)), or could significantly change the nature or increase the quantity of pollutants discharged.
- C.4** **ANTICIPATED NON-COMPLIANCE:**
- C.4.1** The Permittee shall give advance notice to the Administrator of any planned changes in the permitted facility or activity, which may result in noncompliance with permit requirements.
- C.4.2** Reports shall include a certification that the Permittee is in compliance with the permit, and identify any incidents of non-compliances; a narrative explanation must be attached to every non-compliance incident.
- C.5** **ADDRESS FOR SUBMITTAL:**
- C.5.1** All monitoring results and annual reports shall be submitted to the Division; an original signed copy of all reports required herein, shall be submitted to the Division at the following address:

**Division of Environmental Protection
Bureau of Water Pollution Control
901 South Stewart Street, Suite 4001
Carson City, Nevada 89701
ATTN: Compliance Coordinator**

C.6 CHANGE IN DISCHARGE:

C.6.1 All discharges authorized herein shall be consistent with the terms and conditions of this general permit. Any anticipated new discharges at the site related to the discharges as described in Section A which will result in new, different, or increased discharges of pollutants must be reported to the Division. Pursuant to NAC 445A.263, the General Permit may be modified to specify and limit any pollutants not previously limited.

C.7 OPERATION:

C.7.1 The Permittee shall at all times maintain in good working order and operate as efficiently as possible all equipment and ancillary BMPs used by the Permittee to achieve compliance with the terms and conditions of this general discharge permit.

C.8 ADVERSE IMPACT:

C.8.1 The Permittee shall take all reasonable steps to minimize any adverse impact to receiving waters resulting from noncompliance with this General Permit, including such accelerated or additional monitoring as necessary to determine the nature and impact of the noncomplying discharge. The Permittee shall carry out such measures, as reasonable, to prevent significant adverse impacts on human health or the environment.

C.9 REMOVED SUBSTANCES:

C.9.1 Solids removed during the control of discharged water shall be disposed of in a manner to prevent pollution from such materials from entering any surface or ground water.

C.10 MODIFICATION OF MONITORING FREQUENCY AND SAMPLE TYPE:

C.10.1 After considering monitoring data, discharge flow and receiving water conditions, the Division, may, for just cause, modify the monitoring frequency and/or sample type by issuing an order to the Permittee.

C.11 RECORDS RETENTION:

C.11.1 All records and information resulting from the monitoring activities required by this General Permit, including all records of analyses performed and calibration and maintenance of instrumentation and recordings from continuous monitoring instrumentation, shall be retained for a minimum of three (3) years after approval to discharge under this permit, or longer if required by the Administrator.

C.12 DETECTION LIMITS:

C.12.1 All laboratory analysis conducted in accordance with this discharge permit must meet the following criteria:

C.12.1.1 All methods used must be specified or approved in either 40 CFR 136, SW-846 or otherwise approved by the Division. All analytical results must be generated by analytical laboratories certified by the Nevada State laboratory certification program; and

C.12.1.2 Each parameter shall have detection at or below the permit limits or the Reported Detection Level as defined in the analytical method, whichever is lower.

C.13 RIGHT OF ENTRY:

C.13.1 The Permittee shall allow the Administrator and/or his authorized representatives, upon the presentation of credentials;

C.13.2 To enter upon the Permittee's premises (and other property) where a discharge occurs and/or in which any records are required to be kept under the terms and conditions of this General Permit;

C.13.3 At reasonable times, to have access to and copy any records required to be kept under the terms and conditions of this General Permit;

C.13.4 Inspect any monitoring equipment or monitoring method required in this General Permit; or,

C.13.5 Perform any necessary inspection and/or sampling to determine compliance with this General Dewatering Permit or to sample any discharge.

C.14 TRANSFER OF OWNERSHIP OR CONTROL:

C.14.1 In the event of any change in control or ownership from which the authorized discharge emanates, the Permittee shall notify the succeeding owner or controller of the existence of this General Permit, by letter, a copy of which shall be forwarded to the Administrator. The Division must approve ALL transfers of the permit.

C.15 AVAILABILITY OF REPORTS:

C.15.1 Except for data determined to be confidential under NRS 445A.665, all reports prepared in accordance with the terms of this General Permit shall be available for public inspection at the office of the Division. As required by the Clean Water Act and NRS, discharge data shall not be considered confidential. Knowingly making any false statement on any such report may result in the imposition of criminal penalties as provided for in NRS 445A.710.

C.16 FURNISHING FALSE INFORMATION AND TAMPERING WITH MONITORING DEVICES:

C.16.1 Any person who knowingly makes any false statement, representation, or certification in any application, record, report, plan or other document filed or required to be maintained by the provisions of NRS 445A.300 to 445A.730, inclusive, or by any General Permit, rule, regulation or order issued pursuant thereto, or who falsifies, tampers with or knowingly renders inaccurate any monitoring device or method required to be maintained under the provisions of NRS 445A.300 to 445A.730, inclusive, or by any General Permit, rule, regulation or order issued pursuant thereto, is guilty of a gross misdemeanor and shall be punished by a fine of not more than \$10,000 or by imprisonment. This penalty is in addition to any other penalties, civil or criminal, provided pursuant to NRS 445A.300 to 445A.730 inclusive.

C.17 PENALTY FOR VIOLATION OF PERMIT CONDITIONS:

C.17.1 NRS 445A.675 provides that any person who violates a General Permit condition is subject to administrative and judicial sanctions as outlined in NRS 445A.690 through 445A.705.

C.18 PERMIT MODIFICATION, SUSPENSION OR REVOCATION:

C.18.1 After notice and opportunity for a hearing, this permit may be modified, suspended, or revoked in whole or in part during its term for cause including, but not limited to, the following:

C.18.1.1 Violation of any terms or conditions of this permit;

C.18.1.2 Obtaining this permit by misrepresentation or failure to disclose fully all relevant facts;

C.18.1.3 A change in any condition that requires either a temporary or permanent reduction or elimination of the authorized discharge;

C.18.1.4 A determination that the permitted activity endangers human health or the environment and can only be regulated to acceptable levels by permit modification or termination;

C.18.1.5 There are material and substantial alterations or additions to the permitted facility or activity;

C.18.1.6 The Administrator has received new information;

C.18.1.7 The standards or regulations have changed; or

C.18.1.8 The Administrator has received notification that the permit will be transferred.

C.19 LIABILITY:

C.19.1 Nothing in this General Permit shall be construed to preclude the institution of any legal action or relieve the Permittee from any responsibilities, liabilities, or penalties established pursuant to any applicable Federal, State or local laws, regulations, or ordinances.

C.20 PROPERTY RIGHTS:

C.20.1 The issuance of this General Permit does not convey any property rights, in either real or personal property, or any exclusive privileges, nor does it authorize any injury to private property or any invasion of personal rights, nor any infringement of Federal, State or local laws, regulations or ordinances.

C.21 SEVERABILITY:

C.21.1 The provisions of this General Permit are severable, and if any provision of this Permit, or the application of any provisions of this Permit to any circumstance, is held invalid, the application of such provision to other circumstances, and the remainder of this Permit, shall not be affected thereby.

C.22 SIGNATURES, CERTIFICATION REQUIRED ON APPLICATION AND REPORTING FORMS:

C.22.1 All applications, reports, or information submitted to the Administrator shall be signed and certified by making the following certification.

“I hereby certify that I am familiar with the information contained in the application and that to the best of my knowledge and ability such information is true, complete, and accurate.”

C.22.2 All applications, reports or other information submitted to the Administrator shall be signed by one of the following:

C.22.2.1 A principal executive officer of the corporation (of at least the level of vice president) or his authorized representative who is responsible for the overall operation of the facility from which the discharge described in the application or reporting form originates;

C.22.2.2 A general partner of the partnership;

C.22.2.3 The proprietor of the sole proprietorship; or

C.22.2.4 A principal executive officer, ranking elected official or other authorized employee of the municipal, state or other public facility.

C.23 CHANGES TO AUTHORIZATION:

C.23.1 If an authorization under Section C (Signatures, Certification Required on Application and Reporting Forms) is no longer accurate because a different individual or position has responsibility for the overall operation of the facility, a new authorization satisfying the requirements of Section C (Signatures, Certification Required on Application and Reporting Forms) must be submitted to the Administrator prior to or together with any reports, information, or applications to be signed by an authorized representative.

C.24 REAPPLICATION:

C.24.1 If the Permittee desires to continue to discharge, he shall reapply not later than 180 days before this permit expires on the application forms then in use. The renewal application shall be accompanied by the fee required by NAC 445A.268.

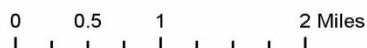
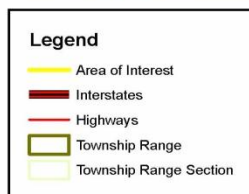
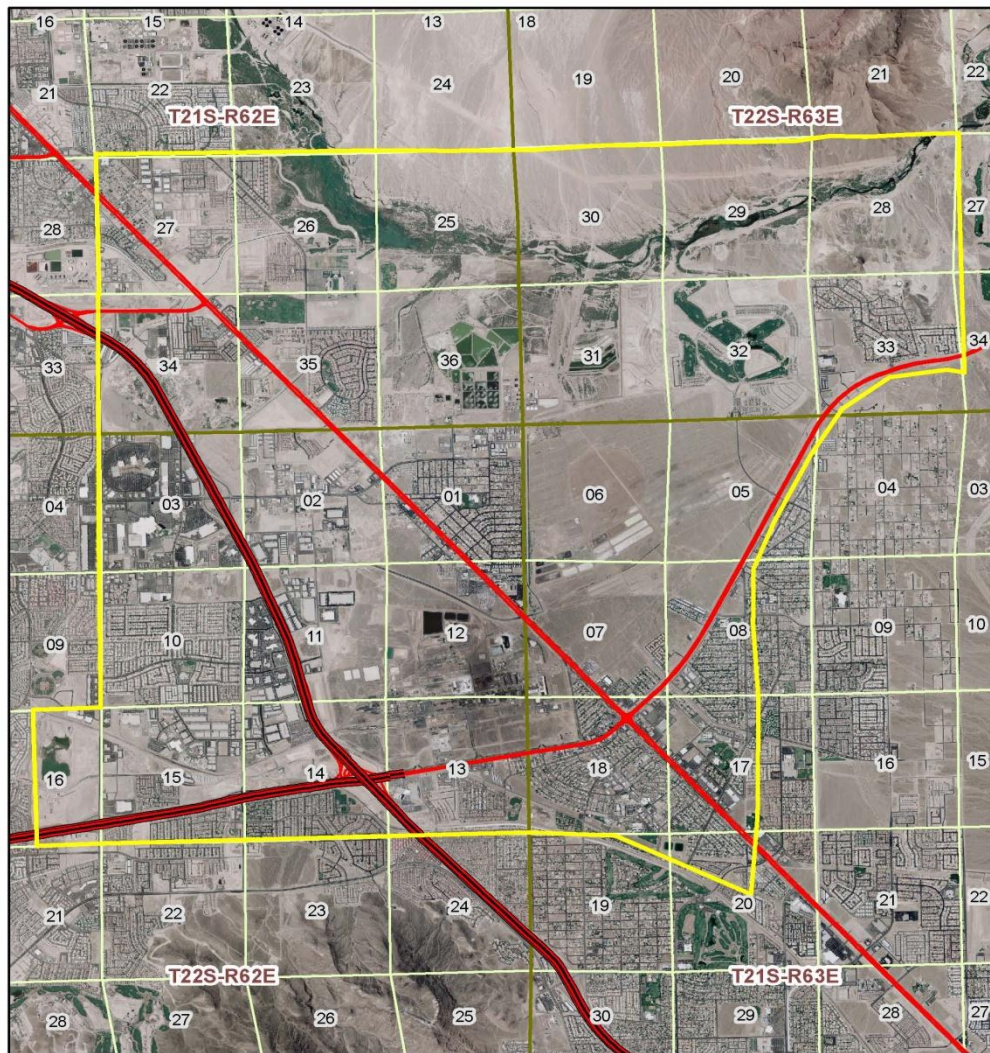
C.25 DUTY TO PROVIDE INFORMATION:

C.25.1 The Permittee shall furnish to the Administrator, within a reasonable time, any relevant information which the Administrator may request to determine whether cause exists for modifying, revoking and reissuing, or terminating this permit, or to determine compliance with this permit. The Permittee shall also furnish to the Administrator, upon request, copies of records required to be kept by this permit.

Attachment I



BMI Complex



Map Created: November 18, 2010
NDEP, Bureau of Corrective Actions
<http://ndep.nv.gov/bca/>
Imagery from USDA NAIP, 2006.